



Subject:	Confirmation – Weight Amendment Fee for Containers – Weigh and Adjustment (Pondus)	
Port (s):	Brisbane, Sydney, Melbourne, Fremantle	
Effective Date	Brisbane: 12 April 2021 Sydney: TBC Melbourne: TBC Fremantle: TBC	
Industry Advisory:		Issue Date: 1 April 2021

Patrick Terminals today advised that the certified and calibrated weighing solution, Pondus, has now completed the testing period at Patrick Terminals – Brisbane AutoStrad. As per previous advice dated 5 November 2020, mis-declared containers will incur the weight amendment fee and invoices to industry will be raised for containers that are identified as mis-declared from 12 April 2021.

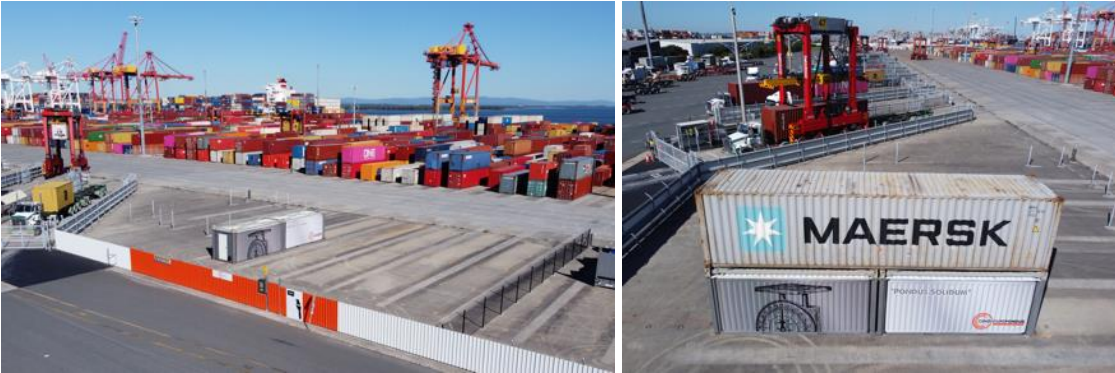
Local industry and operators were briefed on the new weighing solution at the Port of Brisbane Landside Logistics Forum on the 18 March 2021.

Since July 2016, the International Safety of Life at Sea Convention (SOLAS) has required shippers to obtain and document the verified gross mass of a packed container prior to vessel loading. Mis-declared containers have significant safety implications for safe loading of vessels, sea voyage and road transport. This new innovative and calibrated weighing solution, Pondus, will assist in the identification of mis-declared weights through statistical sampling of containers coupled with automated notification of mis-declared weight discrepancies via 1-Stop. The new solution will assist parties to better meet their Chain of Responsibility obligations.

For containers identified by the Pondus weighing stand with a weigh discrepancy variance +/- one metric tonne versus the documented, a weight amendment fee will be incurred. Fees will be charged to the transport carrier for import containers and to the shipping line for export containers. The charge will not apply to import and export containers that have accurately declared container weights or whose variance is less than one metric tonne.

Full details on charges can be found here: <https://patrick.com.au/customer-info/>

Pondus Stand at Patrick Terminals – Brisbane AutoStrad



Video: <https://youtu.be/oNrB9I7IOTk>

About:

Patrick Terminals

Patrick Terminals is Australia's leading container terminal operator. Patrick Terminals operates some of Australia's most technologically advanced container terminals at four strategically located ports around the Australian coast.

Patrick's network of terminals includes Brisbane AutoStrad Terminal, Sydney AutoStrad Terminal, Melbourne Terminal and Fremantle Terminal. Patrick Terminals is co-owned by Qube and Brookfield.

Cindicium Pty Ltd

Cindicium Pty Ltd is an innovative Australian technology company led by Robin Bean who deliver products and services that improve customers' operational efficiency and ensure compliance with road and maritime safety regulations. Cindicium worked in conjunction with Patrick Terminals to develop and manufacture the Pondus stand.